



# Artist's Brief

## JackJumpers High Performance Training Centre – Part B – Mural

<b>Commission</b>	Part B: Outdoor mural
<b>Eligibility</b>	Tasmanian artists who meet our <a href="#">general eligibility criteria</a>
<b>Selection process</b>	<p>The selection committee considers all eligible applications against the selection criteria. The committee then:</p> <ul style="list-style-type: none"><li>• selects an artist for the commission, or</li><li>• shortlists artists to develop their ideas further (each artist will receive a fee of \$500).</li></ul>
<b>Location</b>	2 Twin Ovals Road, Kingston
<b>Audience</b>	Tasmania JackJumpers players and staff, visitors and community members
<b>Fee</b>	\$14,000 + GST (if applicable) for artwork concept, detailed design, fabrication and installation
<b>Key dates</b>	<p>Applications close: 2 June 2025</p> <p>Artwork installed by: 30 May 2026</p>
<b>Contact</b>	<p>Mish Meijers, Public Art Officer</p> <p>Ph 03 6165 6672</p> <p><a href="mailto:mish.meijers@arts.tas.gov.au">mish.meijers@arts.tas.gov.au</a></p>
<b>Apply</b>	<p><a href="http://www.arts.tas.gov.au/public_art">www.arts.tas.gov.au/public_art</a></p>

# The commission

The Department of State Growth invites submissions from Tasmanian artists to create an outdoor mural for the new JackJumpers High Performance Training Centre in Kingston.

## Background

The JackJumpers High Performance Training Centre will become the heart of the JackJumpers' operations, serving as the home of the entire club. The new facility, spanning approximately 3,365 square metres, will include new court facilities, gymnasium, physiotherapy and recovery areas, medical and rehabilitation facilities, merchandising space, players lounge, separate public entry and lobby, public amenities, players' change rooms, kitchen, and lounge facilities, as well as administration and meeting facilities.

The centre will also provide significant social, economic, and cultural benefits for the community in Kingston and surrounding areas, with the new facility being accessible to the community when not being used by the JackJumpers. Together, the new facility and the nearby Kingborough Sports Centre have the potential to become an important sporting district that could potentially increase community participation in sport. The centre will also engage youth through grassroots programs and school visits where the JackJumpers promote active lifestyles, teamwork, aspiration, education, and leadership skills to young people.

For more information about JackJumpers High Performance Training Centre visit:

[https://www.infrastructure.tas.gov.au/major\\_projects/jackjumpers\\_high\\_performance\\_centre](https://www.infrastructure.tas.gov.au/major_projects/jackjumpers_high_performance_centre)

For virtual fly through of the new development, please visit

[https://www.infrastructure.tas.gov.au/major\\_projects/jackjumpers\\_high\\_performance\\_centre](https://www.infrastructure.tas.gov.au/major_projects/jackjumpers_high_performance_centre)

Information on TasNetworks <https://www.tasnetworks.com.au/about-us/Our-business/What-we-do>

## Objectives

The Department of State Growth would like to commission an outdoor mural to be painted directly onto a TasNetworks power substation located outside at the entrance to the facility site.

Designs should complement the building design and features (see render on page 6).

The mural will be a prominent visual feature near the site entrance and should be welcoming, accessible and relevant to the audience.

Artists may propose their own concepts but could consider:

- the wider natural surrounds including the mountain and coast
- sport related or JackJumpers themes
- abstract or representational designs.

## Specific requirements

- The substation will be a 750kVA kiosk with the following dimensions: 3.34m (L) x 1.51m (w) x 1.82m (h) and will be located in the areas designated on the plan below. The surface area to cover is approximately 21 metres squared.

- The substation unit is metal and will require a non-corrosive undercoat/ primer.
- Murals should use high-quality outdoor paint including anti-graffiti coating.
- The budget will need to cover all aspects of the commission including (but not limited to) design, project management, fabrication, implementation, anti-graffiti application and any permits required.

The substation is a TasNetworks asset.

#### TasNetworks Requirements:

- The artwork must not be offensive and shall be free from any racist, abusive, religious, or political connotation.
- Equipment serial numbering and safety signage is on included on the substation to notify the presence of electrical hazards. All tags and signs must not be painted as they contain special colour coding to reflect danger.
- Paint application and finishes must comply with the requirements of Australian Standard 2312.1-2014 (Arts Tasmania will provide a copy of the Standard to selected artist).
- The selected artist's Detailed Design Plan will be checked by electrician before the artist may begin painting.

## Apply

You can apply online via Smartygrants. Your application should include:

- information about your artistic practice
- a description of how you would approach the commission
- a brief biography or CV
- artistic support material – examples of previous work and initial sketches of your concept.

# How it works

## Selection committee

The selection committee is comprised of building users, capital project managers and representatives of partner agencies.

- Tim Cuthbertson, Senior Associate, ARTAS Architects
- Steven de Haan, Senior Project Manager, Major Infrastructure Projects, Department of State Growth
- Mish Meijers, Public Art Officer, Arts Tasmania, Department of State Growth
- Melanie Pritchard, Senior Project Coordinator, Major Infrastructure Projects, Department of State Growth

Members of the selection committee may sometimes nominate a colleague to participate in the selection process on their behalf.

## Selection process

The selection committee will choose an artist to work on the commission using four criteria, as follows:

<b>Suitability</b>	To what extent do the artistic concept, design, materials and delivery method address the brief?
<b>Viability</b>	How feasible is the project given the commission budget, constraints and timelines?
<b>Capability</b>	To what extent does the team demonstrate the necessary skills and experience to deliver the commission?
<b>Vision</b>	How well does the proposal demonstrate a creative or innovative vision in terms of concept, media, construction methods, materials and/or collaborations?

## Commissioning process

### Commission agreement

If you are selected to work on the commission, you will be asked to:

- meet with us to discuss arrangements for the commission, such as payment instalments, roles and responsibilities, insurance
- sign a commissioning agreement to confirm this information in writing

### Detailed design development

Once you have signed the commission agreement you will be asked to:

- produce a detailed design plan to realise your concept, including artwork specifications such as drawings
- make sure your design meets all relevant building standards
- report regularly to the project team as the commission progresses
- manage all aspects of design through to handover

### Fabrication and/or installation

Once your detailed design has been approved by the project team you will be asked to:

- fabricate and/or install your artwork according to the detailed design plan
- meet all work health and safety and other requirements while on site
- keep us updated on progress and let us know as soon as possible if you need to vary the approved timeframe or design

## Handover your artwork

Let us know as soon as possible when you are ready to complete your artwork so we can:

- make sure it meets the approved detailed design plan
- provide you with a handover certificate
- document it for our records
- promote it.

## General information

### The Tasmanian Government Art Site Scheme

This commission is supported through the Tasmanian Government Art Site Scheme. For information about the scheme please visit [the Arts Tasmania website](#).

### Aboriginal and Torres Strait Island content

If your activity involves Aboriginal or Torres Strait Islander content, your application must provide evidence of how you are working with the Aboriginal community. The Tasmanian Government's Office of Aboriginal Affairs can provide advice on working with Tasmanian Aboriginal people and organisations. Please also refer to Creative Australia's [Protocols for using First Nations Cultural and Intellectual Property in the Arts](#).

### Code of practice

Arts Tasmania encourages artists and arts organisations to comply with the National Association for the Visual Arts' [Code of Practice for Visual Arts, Craft and Design](#).

### Workplace health and safety

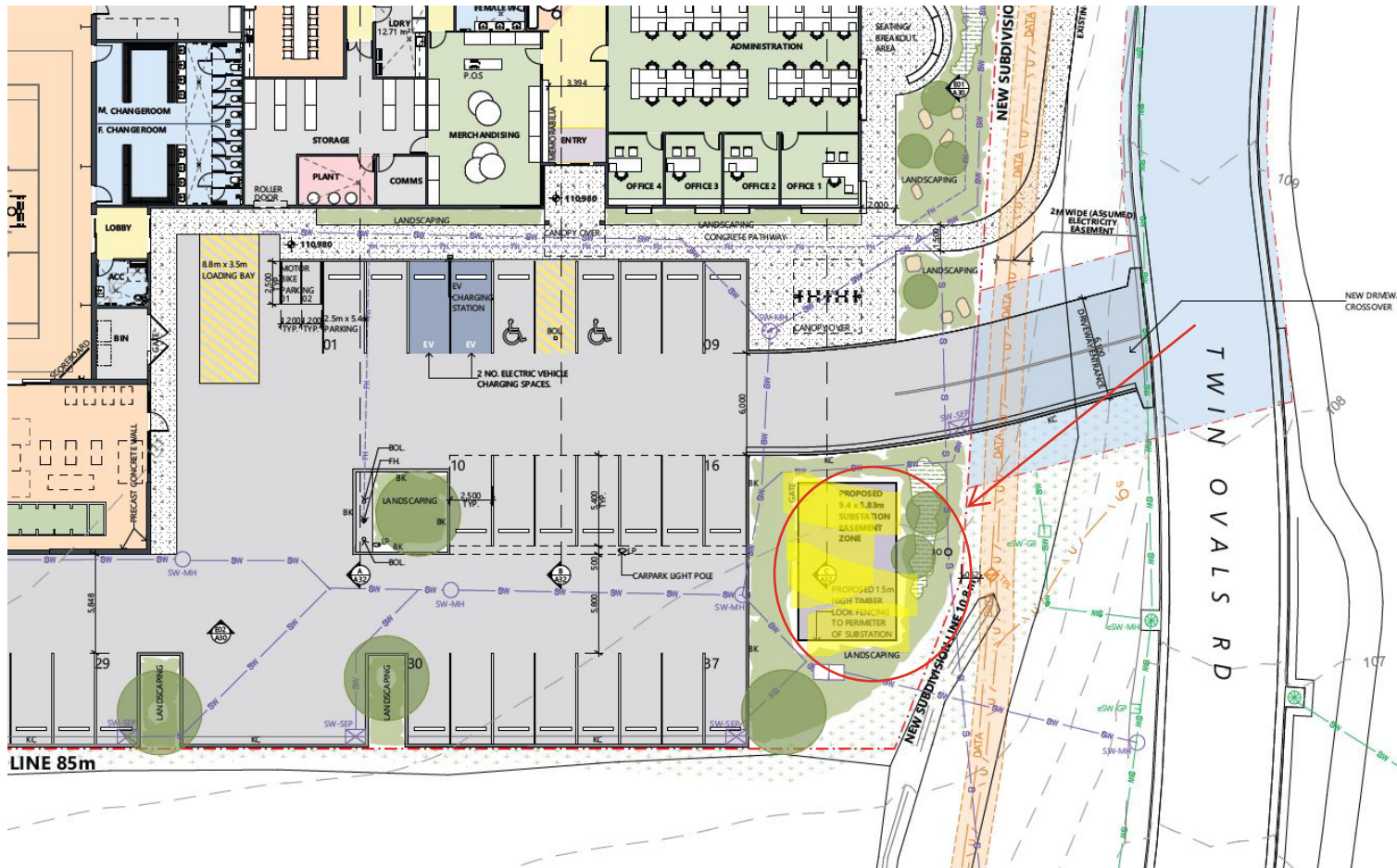
Siting artworks in the public domain can result in safety risks for the public and for artists. The Department of State Growth requires that commissioned artists comply with [Tasmania's Work Health and Safety laws](#) and the [State Growth Work Health and Safety Contractor Standards](#).

If selected for the commission, you will need to have public liability insurance cover of at least \$10 million.

# Project documents

See TasNetworks substation at the entrance to the site below





# HIGH PERFORMANCE TRAINING CENTRE