



Artist's Brief

Hobart City High School
Refurbishment

Commission	Wall-based artworks on internal wall areas
Eligibility	Tasmanian artists who meet Arts Tasmania's general eligibility criteria .
Selection Process	<p>The selection committee will consider all eligible applications against the selection criteria. The committee will then:</p> <p>select one artist (or artist collaboration) for Part A and one artist (or artist collaboration) for Part B of the commission, OR</p> <p>shortlist up to three artists (or artist collaborations) for each part of the commission to develop ideas further (each shortlisted artist will receive a fee of \$500).</p>
Location	Hobart City High School, New Town Campus
Audience	Students and staff
Fee	<p>Part A - \$36,000 (Ex GST)</p> <p>Part B - \$36,000 (Ex GST)</p>
Key dates	<p>Applications close: 23 June 2025</p> <p>Design completed by: 15 September 2025</p> <p>Artwork installed by: 8 December 2025</p>
Contact	<p>Tobias Hengeveld, Public Art & Industry Development Coordinator</p> <p>(03) 6165 6665</p> <p>tobias.hengeveld@arts.tas.gov.au</p>
Apply	<p>www.arts.tas.gov.au/public_art</p>

The commission

The Department for Education, Children and Young People is undertaking a major refurbishment of Hobart City High School's heritage-listed Newtown campus in 2025.

In 2022, Ogilvie High School and New Town High School - both previously single gender schools - amalgamated to become Hobart City High School. Each campus brings a rich history and long-standing traditions of its own, however this commission is for artwork that supports the identity of the new school.

The key to developing the new culture for Hobart City High School is via the school houses, clubs, sporting days and many enrichment activities that bring together students from year 7 to 12 across both campuses.

For more information about Hobart City High School visit:

<https://www.hobartcityhigh.education.tas.edu.au>

Objectives

The school would like to commission two wall-based artworks in a selection of high-traffic zones within the original school building at the New Town campus.

The artworks will be prominent visual features for the student population and should be welcoming, accessible and relevant to students. They have the potential to address the following themes:

- A renewed sense of identity and beginning as an amalgamated, co-educational school
- A welcoming environment that is inclusive of all genders
- Aspects of the four school houses; panupiri, patrula, layna, tiyuratina that each have respective colours and mascots native to Tasmania - visit:

<https://www.hobartcityhigh.education.tas.edu.au/houses-at-hobart-city-high>

Specific requirements

The artworks will be located indoors in key thoroughfare zones for students.

They can either be painted direct to the brick walls or attached as panels or low-relief objects.

The application of selected artwork concepts will be subject to heritage value guidelines for the building, as outlined by the Tasmanian Heritage Council, which may vary between the identified sites.

Part A - Ground Floor:

- This site is a key entryway for students and includes access to the school canteen. The available areas of wall are marked in pink on Project Document 1.
- This zone takes in a series of large pinboards that function as a gallery to showcase student artworks, known as The Hall of Flags. An artwork on the main wall area could also extend above and around these pinboards (*see area marked in yellow on Project Document 1).
- This area also links to an underpass passageway that has been earmarked for a possible future student 'street art' wall project, organised by the school (*see area marked in green on Project Document 1).

Part B - First Floor:

- There are three distinct sites which applicants can choose to respond to singularly or in combination:
 - The library hallway – the area directly outside of the school library. This is a section of continuous wall area, on both sides of the hall (*see area marked in blue on Project Document 3).
 - The North East stairwell – the wall area on both sides of the stairs, spanning ground floor and first floor in some sections, surrounding a curved window atrium, (*see area marked in orange on Project Document 3).
 - The South East stairwell - the wall area of both sides of the stairs, spanning ground floor and first floor in some sections, surrounding a large window atrium, (*see area marked in green on Project Document 3)

Apply

Please provide a CV, examples of relevant prior artwork as well as a written description of your proposed artwork, supported by concept drawings via [our website](#).

How it works

Project team

The project support team is a resource to help you realise your design and meet the project objectives:

- Anne Maynard – Senior Interior Designer, Thomson Rossi
- Britany Roestenburg – Principal, Hobart City High School
- Holly Stewart – Principal, Ogilvie Campus
- Marino Rossi – Architect, Thomson Rossi
- Matt Bilsborough – Capital Project Manager, Department for Education, Children and Young People
- Tobias Hengeveld, Public Art and Industry Development Coordinator, Arts Tasmania

Selection

The project team will choose an artist to work on the commission using the following criteria:

SUITABILITY	To what extent do the artistic concept, design, materials, and delivery method address the brief?
VIABILITY	How feasible is the project given the commission budget, constraints, and timelines?
CAPABILITY	To what extent does the team demonstrate the necessary skills and experience to deliver the commission?

VISION	How well does the proposal demonstrate a creative or innovative vision in terms of concept, media, construction methods, materials and/or collaborations?
---------------	---

Please note that members of the project team may nominate a colleague to participate in the selection process on their behalf.

Commissioning process

Commission agreement

If you are selected to work on the commission, you will be asked to:

- meet with Arts Tasmania to discuss arrangements for the commission, such as payment instalments, roles and responsibilities and insurance
- sign a commissioning agreement to confirm this information in writing.

Detailed design development

Once you have signed the commission agreement you will be asked to:

- produce a detailed design plan to realise your concept, including artwork specifications such as drawings
- produce a detailed design plan to realise your concept, including artwork specifications such as drawings
- make sure that the artwork design meets all relevant building standards
- report regularly to the selection committee as the commission progresses
- manage all aspects of design through to handover of the completed artwork.

Fabrication and/or installation

Once your detailed design has been approved by the project team, you will be asked to:

- fabricate your artwork according to the detailed design plan
- undertake the installation in consultation with the Department and its Contractor
- meet all work health and safety and other requirements while on site
- keep Arts Tasmania updated on your progress and let us know as soon as possible if you need to vary the approved design or timeframe.

Handover your artwork

Let Arts Tasmania know as soon as possible when you are ready to complete your artwork so we can:

- make sure it meets the approved detailed design plan
- provide you with a handover certificate
- document it for our records
- promote it.

General information

The Tasmanian Government Art Site Scheme

This commission is supported through the Tasmanian Government Art Site Scheme. For information about the scheme please visit [the Arts Tasmania website](#).

Aboriginal and Torres Strait Island content

If your activity involves Aboriginal or Torres Strait Islander content, your application must provide evidence of how you are working with the Aboriginal community. Please refer to the [Australia Council for the Arts' Protocols for using First Nations Cultural and Intellectual Property in the Arts](#).

The Tasmanian Government's [Office of Aboriginal Affairs](#) can provide advice on working with Tasmanian Aboriginal people and organisations.

Code of practice

We encourage artists and arts organisations to comply with the National Association for the Visual Arts (NAVA)'s [Code of Practice for Visual Arts, Craft and Design](#).

Workplace health and safety

Siting artworks in the public domain can result in safety risks for the public and for artists. The Department of State Growth requires that commissioned artists comply with Tasmania's [Work Health and Safety laws](#) and the [State Growth Work Health and Safety Contractor Standards](#).

If selected for the commission, you will need to have public liability insurance cover of at least \$10 million.

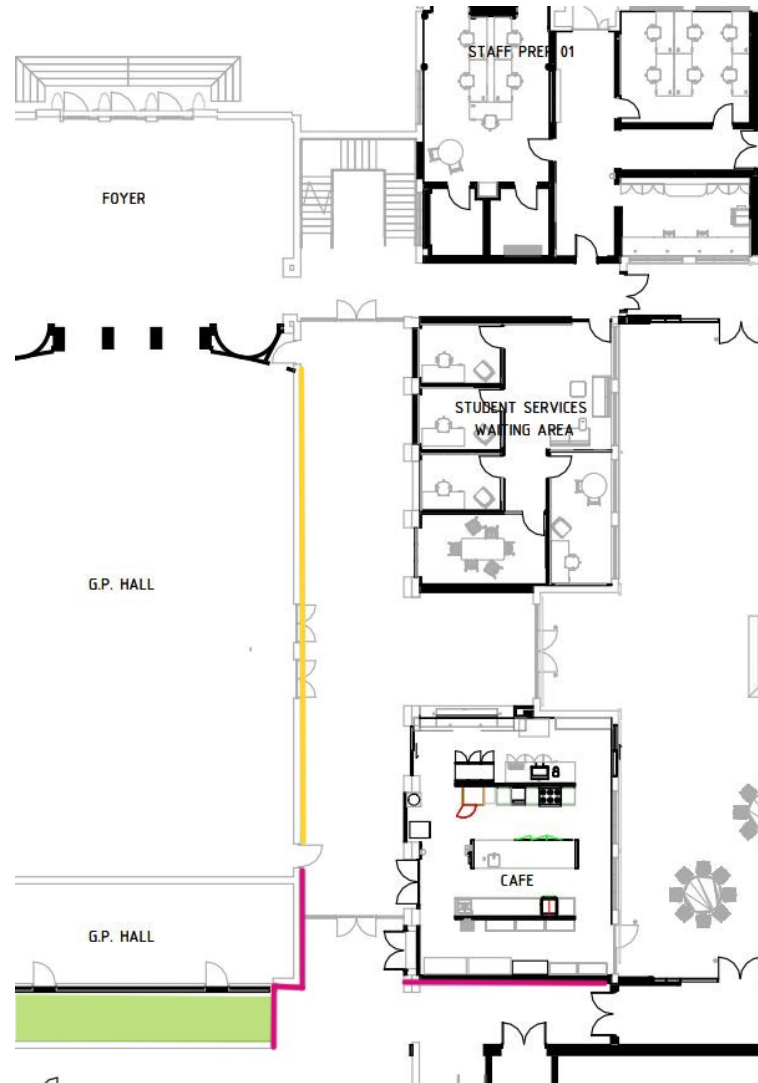
Working with vulnerable people

The *Registration to Work with Vulnerable People Act 2013* aims to protect vulnerable persons, including children and young people, from the risk of harm. It requires those working with children and young people to have a current registration and [Working with Vulnerable People \(WWVP\) card](#).

Please visit our website to see Arts Tasmania's [policy on working with children and young people](#).

Project documents

Document 1: Plan of artwork site on Ground Floor



Document 2: Photos of artwork site on ground floor







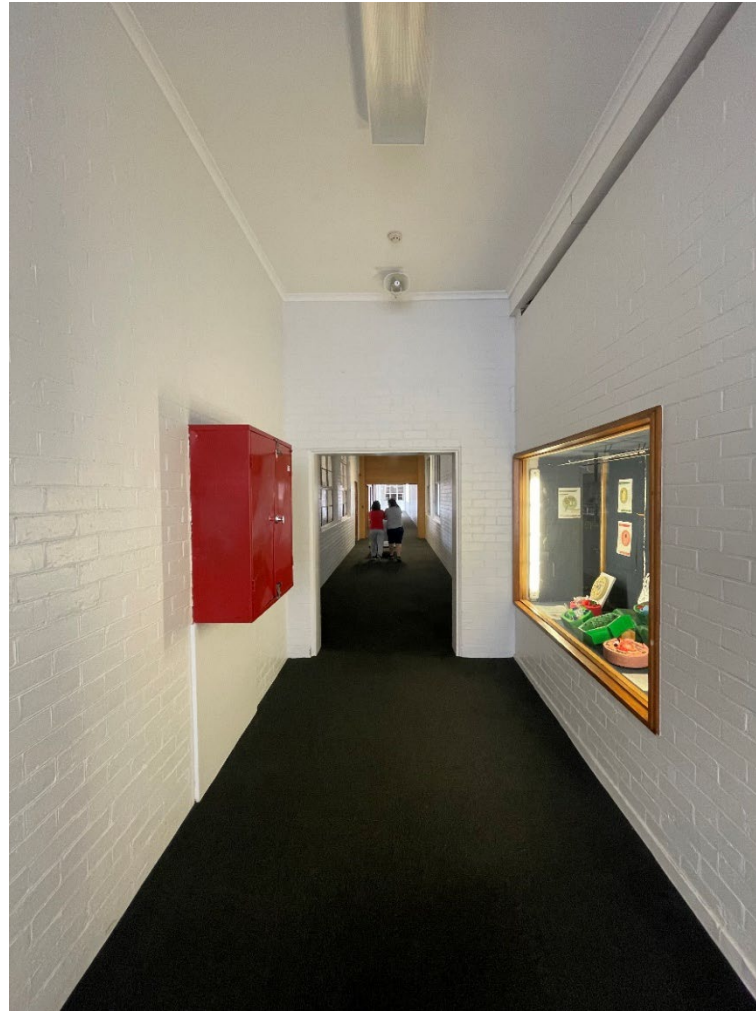




Document 3: Plan of artwork sites on First Floor



Document 4: Photos of artwork site in Library corridor



Document 5: Photos of artwork site – NE stairwell







Document 6: Photos of artwork site – SE stairwell

